

Caddy Lite Installation Instructions for Windows XP (all versions)

The following instructions will enable your Caddy Lite to be connected to your computer running Microsoft Windows XP (all versions) and download course map details via the CaddyConnect software.

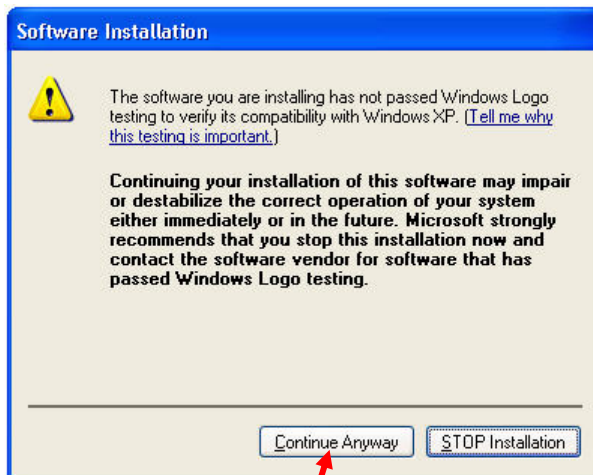
1. Connect your Caddy Lite to your computer using the supplied USB cable.
2. If *Found New Hardware Wizard* is displayed, click *Cancel*.



Click *Cancel*

The Caddy Lite driver software will be loaded when you install the CaddyConnect application.

3. Download and install the CaddyConnect software from <http://www.caddyconnect.com>
4. Follow the instructions on screen once the CaddyConnect set up process has started.
5. During the installation process, when the Caddy Lite drivers are installed, the Device Driver Installation Wizard is displayed.



Click *Continue Anyway*

This window is NOT displayed if your version of XP is set up to always install software unprompted. The CaddyLite drivers have been fully tested on Windows XP.



Click *Continue Anyway*

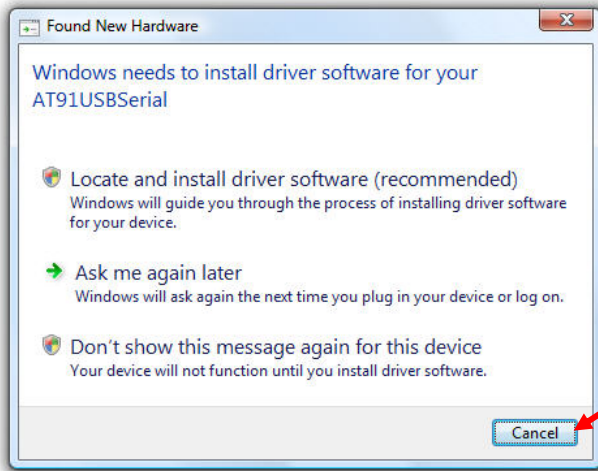
This window is NOT displayed if your version of XP is set up to always install software unprompted. The CaddyLite drivers have been fully tested on Windows XP.

6. Click *Finish* to close the CaddyConnect installation. At this point, if you have ticked the box to *Launch the program*, CaddyConnect will start. Follow the instructions within CaddyConnect that will guide you through the connection process.

Caddy Lite Installation Instructions for Windows Vista (all versions)

The following instructions will enable your Caddy Lite to be connected to your computer running Microsoft Windows Vista (all versions) and download course map details via the CaddyConnect software.

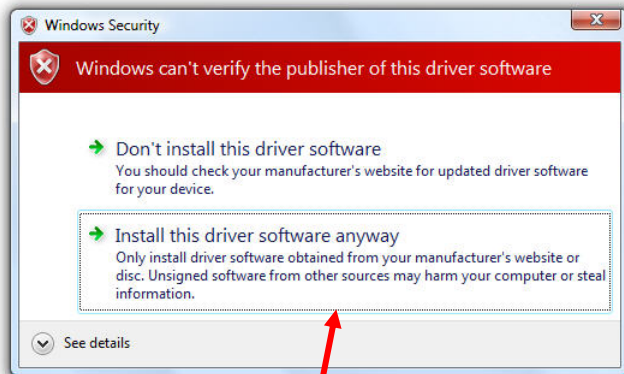
1. Connect your Caddy Lite to your computer using the supplied USB cable.



Click *Cancel*

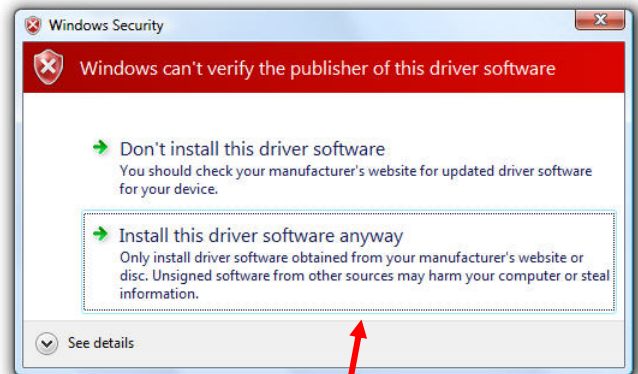
The Caddy Lite driver software will be loaded when you install the CaddyConnect application.

2. If *Found New Hardware* wizard is displayed, click *Cancel*.
3. Download and install the CaddyConnect software from <http://www.caddyconnect.com>
4. Follow the instructions on screen once the CaddyConnect set up process has started.
5. During the installation process, when the Caddy Lite drivers are installed, the Device Driver Installation Wizard is displayed.



Click *Install this driver software anyway*

This window is NOT displayed if your version of Vista is set up to always install software unprompted. The CaddyLite drivers have been fully tested on Windows Vista.



Click *Install this driver software anyway*

This window is NOT displayed if your version of Vista is set up to always install software unprompted. The CaddyLite drivers have been fully tested on Windows Vista.

6. Click *Finish* to close the CaddyConnect installation. At this point, if you have ticked the box to *Launch the program*, CaddyConnect will start. Follow the instructions within CaddyConnect that will guide you through the connection process.